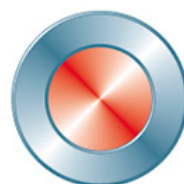


High performance  
knife gate valves for the  
Pulp and Paper industry



**Stafsjö**  
SINCE 1666



# High performance solutions

Our manufacturing of knife gate valves started in 1928 in close cooperation with the nearby pulp and paper industry. Ever since Stafsjö have supplied knife gate solutions to this industry characterized by innovation, high performance and low life cycle cost.

We supply many major pulp and paper groups with knife gate valves, from manual on-off duties to sophisticated fully automated process valves in different materials including Titanium and 254 SMO, from smaller sizes DN 50/2" up to as large as DN 1600/64". Our product range includes special solutions for various pulp and paper processes, like junk trap solutions for high density cleaners, quick closing valves for stock preparation and wood chip cleaners and o-port valves with through-going gates for pulp concentrations up to 18% commonly used under pulp towers. Many of our valve types are available in several pressure classes – up to 20 bar.

Stafsjö is a trusted and established supplier to the pulp and paper industry for almost a century. Our mission "First in knife gate solutions" not only relate to our extensive and long track record, it also holds our ambition to be the solution driven technology leader and the most preferred brand. We work hard to support our customers future challenges and new improved processes.

Through our sister company Ebro Armaturen and external sales partners, we are able to provide fast deliveries, high quality service and support to local markets worldwide.

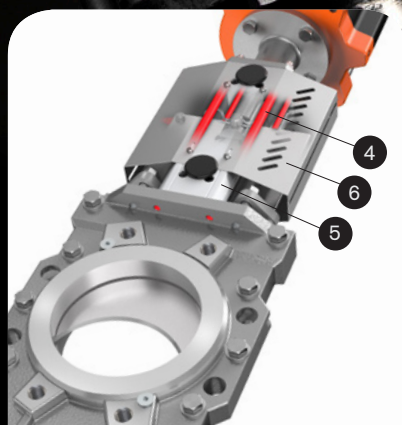


## Product features



### The retainer ring system extend service life and makes it easy to process customize the valves

The retainer rings (1) hold the seats (3) and the back-up o-rings (2) in exact correct position as the gate strokes. They are mechanically locked and can easily be removed for seat change. Both the retainer rings and seats are available in different materials which makes it easy to customize Stafsjö's valves to different process conditions.



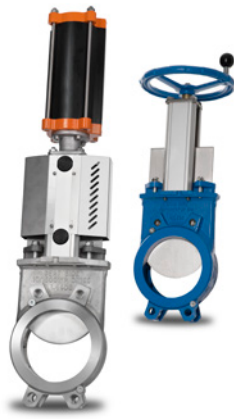
### High strength top works provide an essential and precise gate alignment

Smooth cycling and a tight shut-off independent of valve position is achieved by the high strength top works that provide an essential alignment for the gate. It utilizes stainless steel tie rods (4) encapsulated inside the structural beams (5). Stafsjö assemble stainless steel gate guards (6) as standard on all automated valves.



### A first rate sealing system to surrounding environment

Stafsjö's gland box sealing system with TwinPack (7) braids offers high mechanical strength, excellent chemical resistance and a tight seal to environment. Rated to max 260 °C. Extra scrapers or double gland can be used for the most severe service conditions.



### MV

This is a standard high performance valve for on-off and control duties in pulp and related processes. Extremely reliable shut-off performance have made it popular among users worldwide for decades. The modular design and simple maintenance makes it easy to achieve low cost of ownership.



### WB14E

This is a resilient seated high performance shut-off valve with superior flow characteristics, offering bi-directional zero leakage shut-off. The fully lugged body design makes it also suitable for dead-end services.



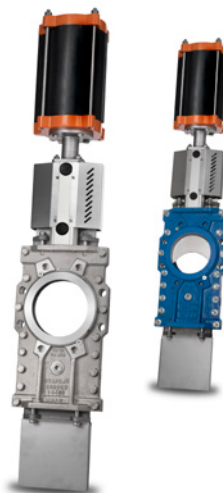
### TV

This is an isolation valve for tanks which require a short face-to-face. With origin in the MV valve, this features a unique flange drilling and actuator to enable direct assembly on the tank. Any transmitters can be dismounted without draining the tank.



### XV

The retainer ring sealing system on both sides of the gate ensures a tight shut-off independent of pressure direction. XV is supplied with either a fully or a semi lugged valve body.



### HL, HG and HP

Stafsjö's knife gate valves with through-going gates are known for their superior flow characteristics and reliable bi-directional zero leakage shut-off on highly concentrated media and static media columns. They are ideal pulp tower isolation valves, available in several pressure ratings making it easy to customize to different process conditions.



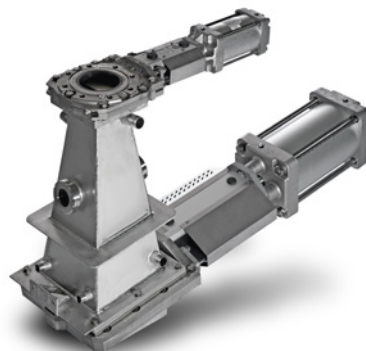
### HX

With origin in Stafsjö's HP range this is an all-over reinforced version capable of handling the most demanding high pressure applications. It comes in stainless steel as standard but Titanium version is also available for the bleaching stage.



### D2G

The D2G have two hard chromed gates working towards each other in the bore, providing extremely fast operation. It is suitable for stock preparation and wood chip cleaners or as junc traps on contaminated media or reject handling.



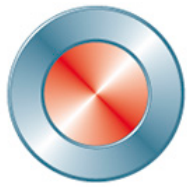
### Junk Trap JT

A complete Junk Trap designed for reject applications. It consist of RKO, specially designed JTV in the bottom and a reject tank in between the two valves. The product is specially designed to minimize turbulence, erosive wear and build-up of solids and reject material.



### RKO

This is a ideal valve for cleaners containing large amount of abrasive and difficult solids. A straight bevel edge gate and a round inlet with a larger square outlet counteract blockages, which often is problem in junc traps. The RKO can be supplied with an adaptor cone for connection to a circular flange.



**Stafsjö**  
SINCE 1666



**Valve  
& Automation**  
Total Valve & Control Solutions®

**JOHANNESBURG**  
Tel: 011 397 2833

**DURBAN**  
Tel: 031 579 2593

**South Africa:**  
**0861 103 103**

E-mail: [sales@valve.co.za](mailto:sales@valve.co.za)  
**[www.valve.co.za](http://www.valve.co.za)**



SCAN ME